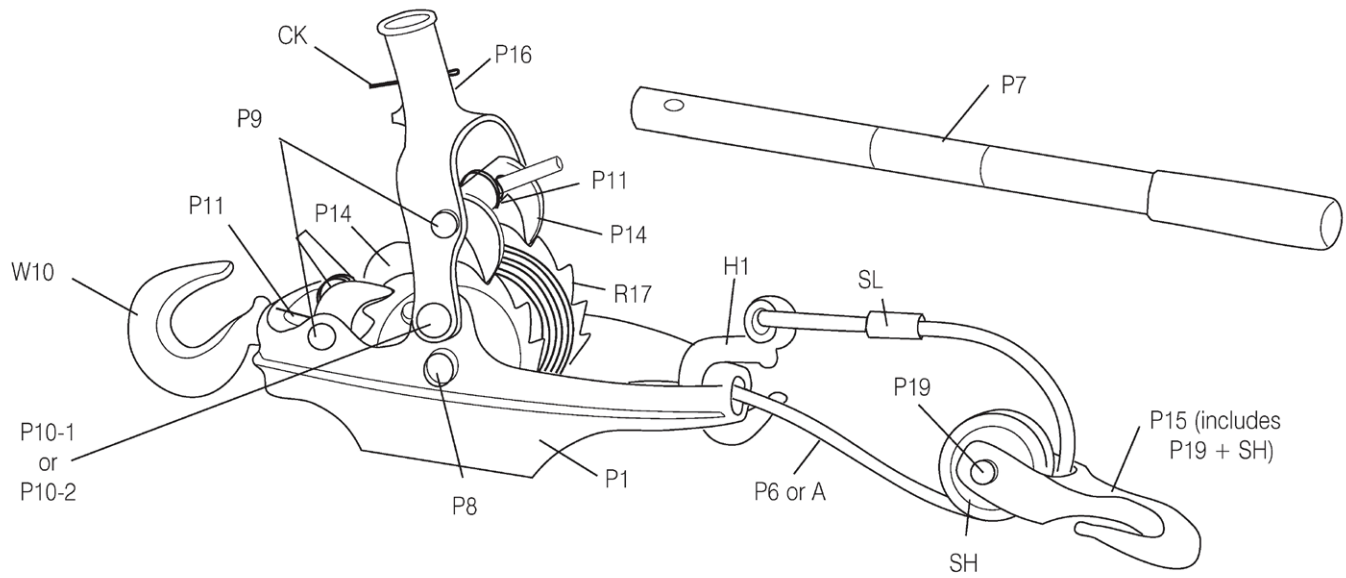




The Wyeth-Scott Company

MANUFACTURER OF **THE MORE POWER PULLER®** SINCE 1934

PULLER REPLACEMENT PARTS & ACCESSORIES CATALOG



Maintaining your More Power Puller® is easy to do. We stock a complete inventory of parts for almost any model of the More Power Puller®. See our website or call for a parts pricing list. In addition, we can refurbish pullers, too. Just give us a call to discuss.

The More Power Puller® is available with steel cable or AmSteel®Blue Synthetic Rope.



CONTENTS

2-Ton More Power Puller® Cable (wire rope) Models

2-20	2-Ton, 20' Cable Model Power Puller	4
2-20-SLT	2-Ton, 20' Cable Model Power Puller with SLT Safety Latches	4
2-30	2-Ton, 30' Cable Model Power Puller	4
2-30-SLT	2-Ton, 30' Cable Model Power Puller with SLT Safety Latches	4
2-35	2-Ton, 35' Cable Model Power Puller	4
2-35-SLT	2-Ton, 35' Cable Model Power Puller with SLT Safety Latches	4

3-Ton More Power Puller® Cable (wire rope) Models

3-20	3-Ton, 20' Cable Model Power Puller	5
3-20-SLT	3-Ton, 20' Cable Model Power Puller with SLT Safety Latches	5

More Power Puller® AmSteel®Blue Synthetic Rope Models

2-20-A-SLT	2-Ton, 20' AmSteel-Blue Model Power Puller with SLT Safety Latches	5
3-35-A-SLT	3-Ton, 35' AmSteel-Blue Model Power Puller with SLT Safety Latches	5

REPLACEMENT PARTS - 2 TON MODEL / CABLE

P620	20' of 5/16" cable with rivet attachment.....	6
P620-H1	20' of 5/16" cable with H1 end hook attached	6
P620-H1-SLT	20' of 5/16" cable with H1 end hook & safety latch attached	6
P630	30' of 5/16" cable with rivet attachment.....	6
P630-H1	30' of 5/16" cable with H1 end hook attached	6
P630-H1-SLT	30' of 5/16" cable with H1 end hook & safety latch attached	6
P635	35' of 5/16" cable with rivet attachment.....	6
P635-H1	35' of 5/16" cable with H1 end hook attached	6
P635-H1-SLT	35' of 5/16" cable with H1 end hook & safety latch attached	6

REPLACEMENT PARTS - 2 TON MODEL / SYNTHETIC ROPE AmSteel®Blue

A-20-H1-SLT	20' of 5/16" AmSteel-Blue Synthetic rope with H1 end & safety latch attached	6
A-35-H1-SLT	35' of 5/16" AmSteel-Blue Synthetic rope with H1 end & safety latch attached.....	6

REPLACEMENT PARTS - 2 TON MODEL / CABLE ATTACHMENTS

RF	Rivet & Ferrule.....	7
R	Rivet	7
F	Ferrule	7
P13	Cable Clamp for 5/16" cable. 2 required	7
SL	Aluminum alloy sleeve	7

REPLACEMENT PARTS - 2 TON MODEL / FRAME • REEL • YOKE • PAWL

P14	Pawl.....	7
P9	Rivet for Pawl.....	7
P11	Spring for Pawl on Yoke or Frame.....	7
P21	Spring for Pawl on Yoke for pre-1981 models. Fits old style 1-1/2 ton models ONLY.....	7
P16	Yoke with 2 shoulder rivets.....	7
P10-1	Shoulder Rivet (attach yoke, 2 required). Fits older models. See note on page.....	7
P10-2	Shoulder Rivet (attach yoke, 2 required). Fits models from 2012/13. See note on page	7
R17	Reel	7
P8	Tubular rivet for reel.....	8
P22	Drag Wave Washer for reel	8
P1	Frame	8

REPLACEMENT PARTS - 2 TON MODEL / HANDLES • COTTER KEY

P7	Tubular Safety Handle	8
P7-EXT	Tubular Safety Handle Extension	8
CK	Cotter Key	8

REPLACEMENT PARTS - 2 TON MODEL / HOOKS • SAFETY LATCHES

SLT-1	Safety Latch for H1 Hook.....	8
H1	Hook (end of cable)	8

H1-SLT	Hook with Safety Latch (end of cable).....	8
SLT-2	Safety Latch (for P15, P15-3, W10 hooks)	8
P15	Tackle Block Hook (with P19 and SH)	8
P15-SLT	Tackle Block Hook with Safety Latch (with P19 and SH)	8
W10	Frame Hook (includes nut)	9
W10-SLT	Frame Hook with Safety Latch (includes nut)	9
SH	Sheave	9
P19	Clevis Pin with Hitch Pin	9

REPLACEMENT PARTS - 3 TON MODEL / CABLES

P620	20' of 5/16" cable with rivet attachment.....	9
P620-H1	20' of 5/16" cable with H1 end hook attached	9
P620-H1-SLT	20' of 5/16" cable with H1 end hook & safety latch attached	9

REPLACEMENT PARTS - 3 TON MODEL / SYNTHETIC ROPE AmSteel®Blue

A-20-H1-SLT	20' of 5/16" AmSteel-Blue Synthetic rope with H1 end & safety latch attached	9
A-35-H1-SLT	35' of 5/16" AmSteel-Blue Synthetic rope with H1 end & safety latch attached	9

REPLACEMENT PARTS - 3 TON MODEL / CABLE ATTACHMENTS

RF	Rivet & Ferrule.....	10
R	Rivet	10
F	Ferrule	10
P13	Cable Clamp for 5/16" cable. 2 required	10
SL	Aluminum alloy sleeve	10

REPLACEMENT PARTS - 3 TON MODEL / FRAME • REEL • YOKE • PAWL

P14	Pawl.....	10
P9	Rivet for Pawl.....	10
P11	Spring for Pawl on Yoke or Frame.....	10
P16	Yoke with 2 shoulder rivets.....	10
P10-1	Shoulder Rivet (attach yoke, 2 required). Fits older models. See note on page.....	10
P10-2	Shoulder Rivet (attach yoke, 2 required). Fits models from 2012/13. See note on page	10
R17	Reel	10
P8	Tubular rivet for reel.....	10
P22	Drag Wave Washer for reel	11
P1	Frame	11

REPLACEMENT PARTS - 3 TON MODEL / HANDLES • COTTER KEY

P7-3	Tubular Safety Handle for 3-ton unit.....	11
P7-3-EXT	Tubular Safety Handle Extension for 3-ton unit.....	11
CK	Cotter Key	11

REPLACEMENT PARTS - 3 TON MODEL / HOOKS • SAFETY LATCHES

SLT-1	Safety Latch for H1 Hook.....	11
H1	Hook (end of cable)	11
H1-SLT	Hook with Safety Latch (end of cable).....	11
SLT-2	Safety Latch (for P15, P15-3, W10 hooks)	11
P15-3	Tackle Block Hook (with P19-3 and SH-3)	11
P15-3-SLT	Tackle Block Hook with Safety Latch (with P19-3 and SH-3).....	11
W10	Frame Hook (includes nut)	12
W10-SLT	Frame Hook with Safety Latch (includes nut)	12
SH-3	Sheave	12
P19-3	Clevis Pin with Hitch Pin	12

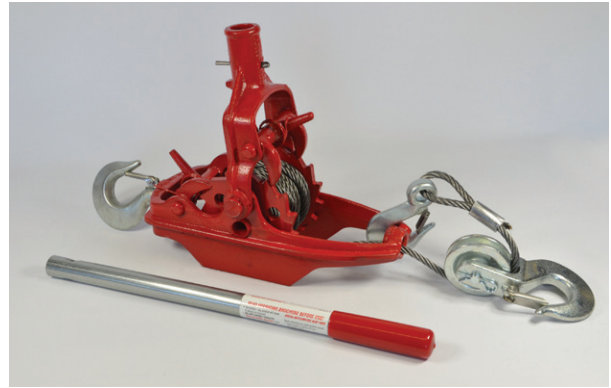
ACCESSORIES / SLINGS (extension cables w/loop on each end)

CO5	5' sling made with 5/16" cable.....	12
C10	10' sling made with 5/16" cable.....	12
C25	25' sling made with 5/16" cable.....	12
C50	50' sling made with 5/16" cable.....	12
C100	100' sling made with 5/16" cable.....	12



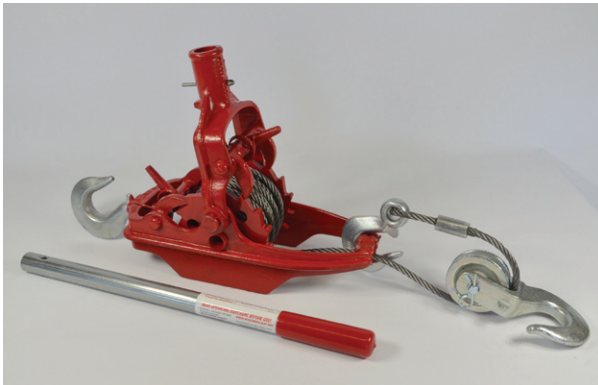
2-20 2-TON, 20' CABLE MODEL

Includes 20' of 5/16" wire rope. 4,000 lbs dead-lift rating (with double line); 8,000 lbs pull/drag rating* (with double line). 25.2 lbs total weight.



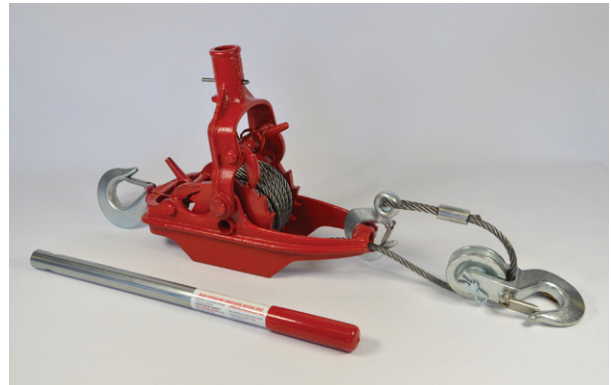
2-20-SLT 2-TON, 20' CABLE MODEL W/SLT SAFETY LATCHES

Same as the 2-20 but with installed SLT latches. 25.4 lbs total weight.



2-30 2-TON, 30' CABLE MODEL

Includes 30' of 5/16" wire rope. 4,000 lbs dead-lift rating (with double line); 8,000 lbs pull/drag rating* (with double line). 26.8 lbs total weight.



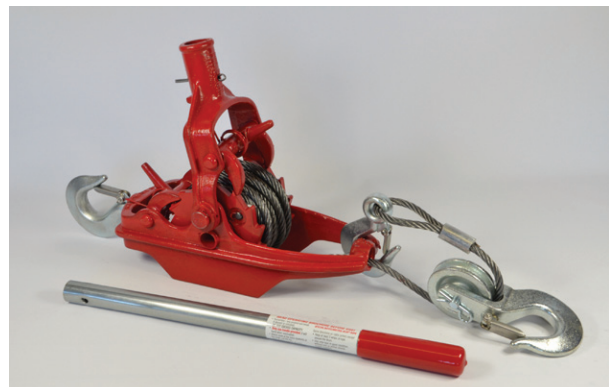
2-30-SLT 2-TON, 30' CABLE MODEL W/SLT SAFETY LATCHES

Same as the 2-30 but with installed SLT latches. 27 lbs total weight.



2-35 2-TON, 35' CABLE MODEL

Includes 35' of 5/16" wire rope. 4,000 lbs dead-lift rating (with double line); 8,000 lbs pull/drag rating* (with double line). 27.6 lbs total weight.



2-35-SLT 2-TON, 35' CABLE MODEL W/SLT SAFETY LATCHES

Same as the 2-35 but with installed SLT latches. 27.8 lbs total weight.



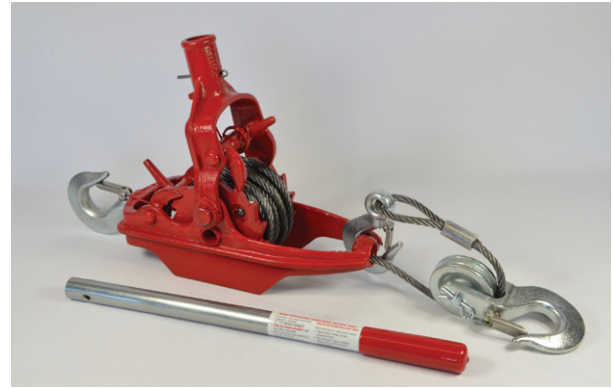
The Wyeth-Scott Company
Manufacturer of the More Power
Puller® since 1934

85 Dayton Road • P.O. Box 888 • Newark, Ohio 43058-0888 • USA
Email: sales@wyeth-scott.com • www.wyeth-scott.com
Phone: 800/743-4521 or 740/345-4528 • Fax 740/345-0123



3-20 3-TON, 20' CABLE MODEL

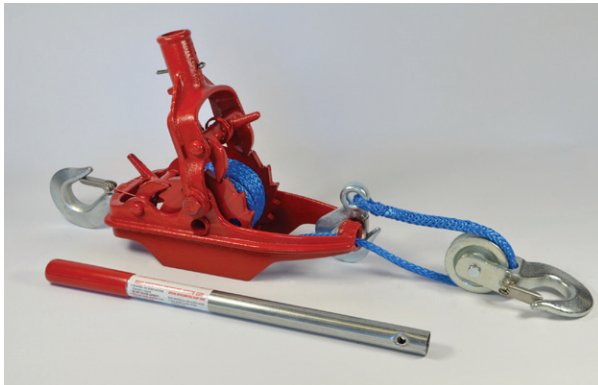
Includes 20' of 5/16" wire rope. 6,000 lbs dead-lift rating (with double line); 12,000 lbs pull/drag rating* (with double line). 26 lbs total weight.



3-20-SLT 3-TON, 20' CABLE MODEL W/SLT SAFETY LATCHES

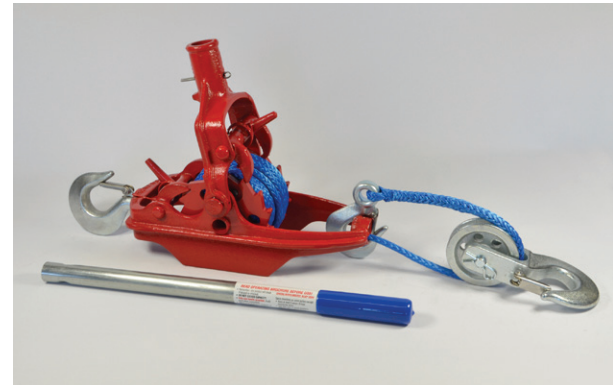
Same as the 3-20 but with installed SLT latches. 26.2 lbs total weight.

More Power Puller® AmSteel®Blue Synthetic Rope Models



2-20-A-SLT 2-TON, 20' AMSTEEL®BLUE MODEL W/SLT SAFETY LATCHES

Includes 20' of 5/16" AmSteel-Blue Synthetic Rope with installed SLT latches. 4,000 lbs dead-lift rating (with double line); 8,000 lbs pull/drag rating* (with double line). 22.8 lbs total weight.



3-35-A-SLT 3-TON, 35' AMSTEEL®BLUE MODEL W/SLT SAFETY LATCHES

Includes 35' of 5/16" AmSteel-Blue Synthetic Rope with installed SLT latches. 6,000 lbs dead-lift rating (with double line); 12,000 lbs pull/drag rating*. 24.2 lbs total weight.

***NOTE:** Pull/Drag Ratings for comparison only. Winches and a few pullers are rated this way. There are too many variables to determine a scientific drag/pull rating, however, the commonly used ratio is 2:1. Variables include surface type (mud/rocks +), the incline, type of object being dragged, etc. The Pull/Drag Rating is mainly used for an object with wheels (vehicle).

REPLACEMENT PARTS - 2-TON MODEL

CABLES

PAGE 6



P620

20' of 5/16" cable with rivet attachment (ready to apply to reel)



P620-H1

20' of 5/16" cable w/H1 end hook attached to cable (RF included, but not 100% installed)



P620-H1-SLT

20' of 5/16" cable w/H1 end hook (w/safety latch) attached to cable (RF included, but not 100% installed)



P630

30' of 5/16" cable with rivet attachment (ready to apply to reel)



P630-H1

30' of 5/16" cable w/H1 end hook attached to cable (RF included, but not 100% installed)



P630-H1-SLT

30' of 5/16" cable w/H1 end hook (w/safety latch) attached to cable (RF included, but not 100% installed)



P635

35' of 5/16" cable with rivet attachment (ready to apply to reel)



P635-H1

35' of 5/16" cable w/H1 end hook attached to cable (RF included, but not 100% installed)



P635-H1-SLT

35' of 5/16" cable w/H1 end hook (w/safety latch) attached to cable (RF included, but not 100% installed)

SYNTHETIC ROPE

AmSteel®Blue



A-20-H1-SLT

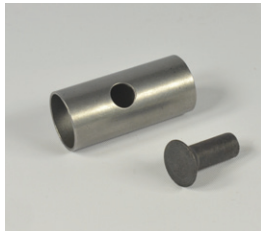
20' of 5/16" AmSteel-Blue Synthetic rope w/H1 end hook (w/safety latch) installed on rope (RF included but not 100% installed)



A-35-H1-SLT

35' of 5/16" AmSteel-Blue Synthetic rope w/H1 end hook (w/safety latch) installed on rope (RF included but not 100% installed)

CABLE ATTACHMENTS



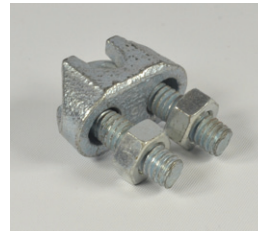
RF Rivet & Ferrule.
Cable to reel attachment.



R Rivet. Cable to reel
attachment.



F Ferrule. Cable to
reel attachment.



P13 Cable Clamp - for
5/16" cable. 2 required.



SL Sleeve. Aluminum
alloy. Mfg installed.

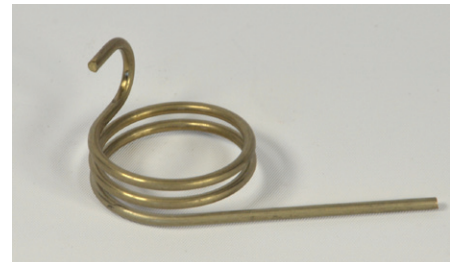
FRAME • REEL • YOKE • PAWL



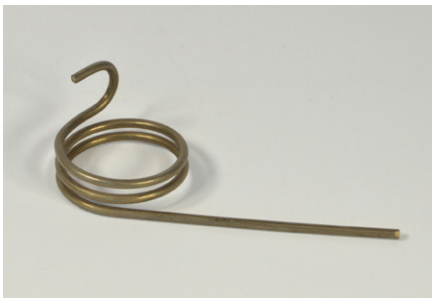
P14 Pawl



P9 Rivet for Pawl



P11 Spring for Pawl on Yoke or Frame



P21 Spring for Pawl on Yoke for
pre-1981 models. Fits old style 1-½ ton
models ONLY.



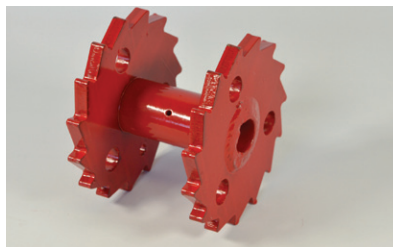
P16 Yoke with 2 Shoulder Rivets



***P10-1** Shoulder Rivet (at-
tach Yoke, 2 required)



***P10-2** Shoulder Rivet (attach
Yoke, 2 required)



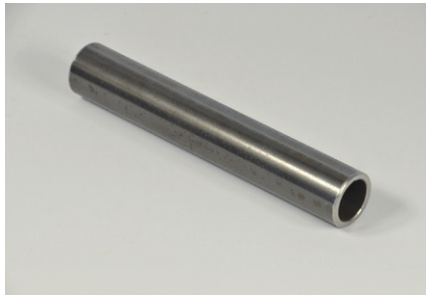
R17 Reel

***NOTE:** P10-1 rivet fits older
models from 1934 to some from
2013 and is flush to the yoke.
P10-2 is a newer rivet on models
beginning in 2012/13 and extends
1/8" beyond the yoke. Check your
model before you order!



The Wyeth-Scott Company
Manufacturer of the More Power
Puller® since 1934

85 Dayton Road • P.O. Box 888 • Newark, Ohio 43058-0888 • USA
Email: sales@wyeth-scott.com • www.wyeth-scott.com
Phone: 800/743-4521 or 740/345-4528 • Fax 740/345-0123



P8 Tubular Rivet for Reel



P22 Drag Wave Washer for Reel

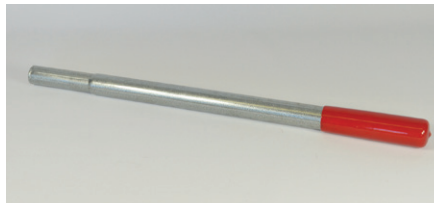


P1 Frame

HANDLES • COTTER KEY



P7 Tubular Safety Handle



P7-EXT Tubular Safety Handle Extension. 18" long with red grip. Inserts into P7 handle - 2 ton unit.



CK Cotter Key

HOOKS • SAFETY LATCHES



SLT-1 Safety Latch (for H1 Hook)



H1 Hook (end of cable)



H1-SLT Hook with Safety Latch (end of cable)



SLT-2 Safety Latch (for P15, P15-3 & W10 Hooks)



P15 Tackle Block Hook (includes P19 & SH)



P15-SLT Tackle Block Hook with Safety Latch (includes P19 & SH)



The Wyeth-Scott Company
Manufacturer of the More Power
Puller® since 1934

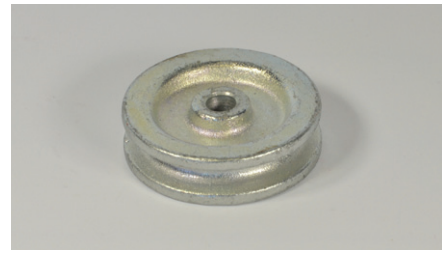
85 Dayton Road • P.O. Box 888 • Newark, Ohio 43058-0888 • USA
Email: sales@wyeth-scott.com • www.wyeth-scott.com
Phone: 800/743-4521 or 740/345-4528 • Fax 740/345-0123



W10 Frame Hook (includes nut)



W10-SLT Frame Hook with Safety Latch (includes nut)



SH Sheave



P19 Clevis Pin with hitch pin (attach SH to P15)

REPLACEMENT PARTS • 3-TON MODEL

CABLES



P620
20' of 5/16" cable with rivet attachment (ready to apply to reel)



P620-H1
20' of 5/16" cable w/H1 end hook attached to cable (RF included, but not 100% installed)



P620-H1-SLT
20' of 5/16" cable w/H1 end hook (w/safety latch) attached to cable (RF included, but not 100% installed)

SYNTHETIC ROPE AmSteel®Blue



A-20-H1-SLT
20' of 5/16" AmSteel-Blue Synthetic rope w/H1 end hook (w/safety latch) installed on rope (RF included but not 100% installed)



A-35-H1-SLT
35' of 5/16" AmSteel-Blue Synthetic rope w/H1 end hook (w/safety latch) installed on rope (RF included but not 100% installed)

CABLE ATTACHMENTS



RF Rivet & Ferrule.
Cable to reel attachment.



R Rivet. Cable to reel
attachment.



F Ferrule. Cable to
reel attachment.



P13 Cable Clamp - for
5/16" cable. 2 required.



SL Sleeve. Aluminum
alloy. Mfg installed.

FRAME • REEL • YOKE • PAWL



P14 Pawl



P9 Rivet for Pawl



P11 Spring for Pawl on Yoke or Frame



P16 Yoke with 2 Shoulder Rivets

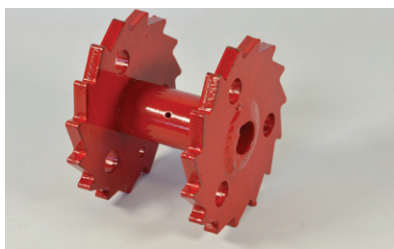


***P10-1** Shoulder Rivet (at-
tach Yoke, 2 required)

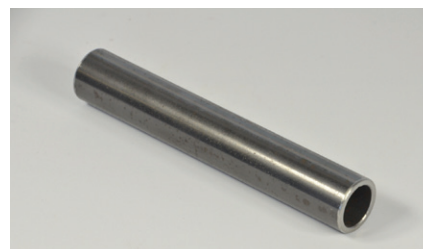
***NOTE:** P10-1 rivet fits older models from 1934 to some from 2013 and is flush to the yoke. P10-2 is a newer rivet on models beginning in 2012/13 and extends 1/8" beyond the yoke. Check your model before you order!



***P10-2** Shoulder Rivet (attach
Yoke, 2 required)



R17 Reel



P8 Tubular Rivet for Reel



P22 Drag Wave Washer for Reel



P1 Frame

HANDLES • COTTER KEY



P7-3 Tubular Safety Handle for 3-ton unit. Blue grip.



P7-3-EXT Safety Handle Extension for 3-ton unit. 18" long with blue grip. Inserts into P7-3.



CK Cotter Key

HOOKS • SAFETY LATCHES



SLT-1 Safety Latch (for H1 Hook)



H1 Hook (end of cable)



H1-SLT Hook with Safety Latch (end of cable)



SLT-2 Safety Latch (for P15, P15-3 & W10 Hooks)



P-15-3 Tackle Block Hook (includes P19-3 & SH-3)



P15-3 SLT Tackle Block Hook with Safety Latch (includes P19-3 & SH-3)



The Wyeth-Scott Company

Manufacturer of the More Power
Puller® since 1934

85 Dayton Road • P.O. Box 888 • Newark, Ohio 43058-0888 • USA
Email: sales@wyeth-scott.com • www.wyeth-scott.com
Phone: 800/743-4521 or 740/345-4528 • Fax 740/345-0123

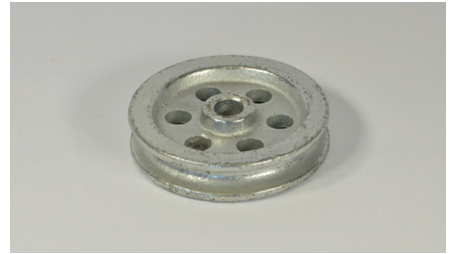
HOOKS • SAFETY LATCHES CONT'D



W10 Frame Hook (includes nut)



W10-SLT Frame Hook with Safety Latch (includes nut)



SH-3 Sheave



P19-3 Clevis pin with hitch pin.
Attach SH-3 to P15-3,

ACCESSORIES

SLINGS (extension cables w/loop on each end)



C05 5' sling made with 5/16" cable



C10 10' sling made with 5/16" cable



C25 25' sling made with 5/16" cable



C50 50' sling made with 5/16" cable



C100 100' sling made with 5/16" cable



The Wyeth-Scott Company
Manufacturer of the More Power
Puller® since 1934

85 Dayton Road • P.O. Box 888 • Newark, Ohio 43058-0888 • USA
Email: sales@wyeth-scott.com • www.wyeth-scott.com
Phone: 800/743-4521 or 740/345-4528 • Fax 740/345-0123